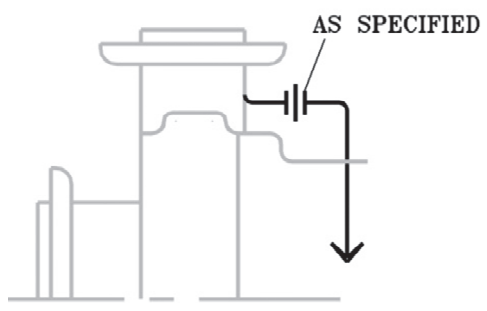


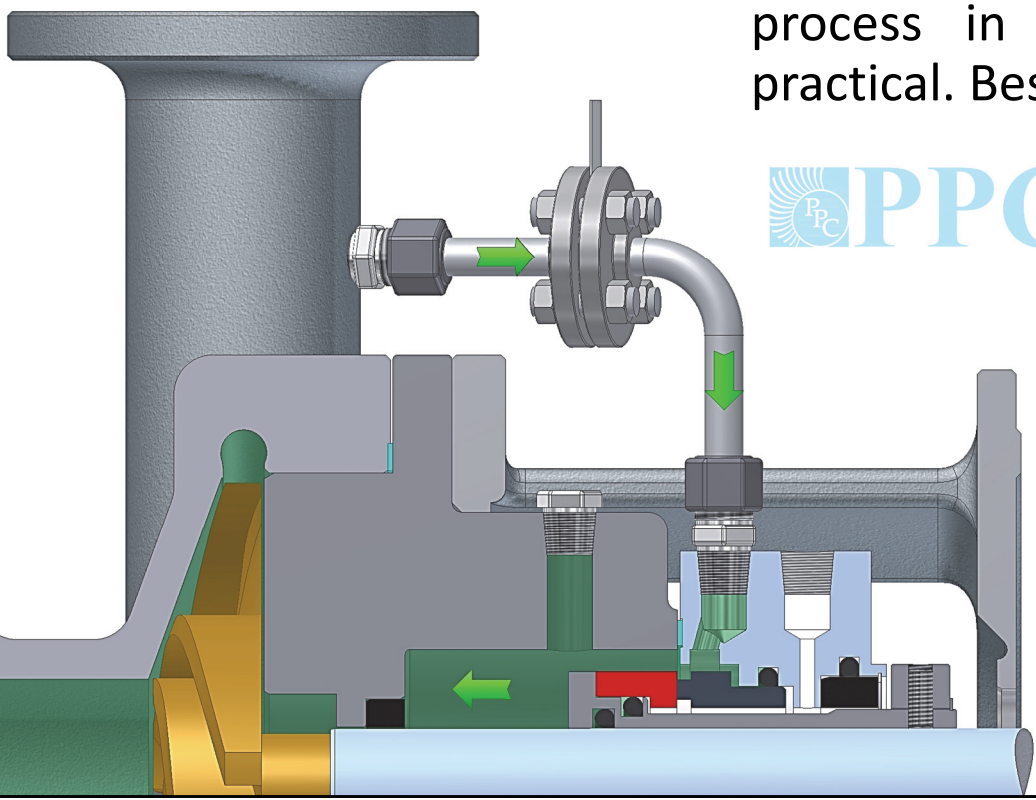
Plan 11



Description: Plan 11 is recirculation from pump discharge through an 1/8" minimum flow control orifice (when necessary), to the seal and back into the process through the pump seal chamber.

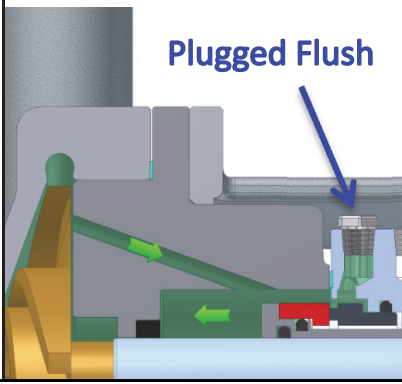
Objective: Dissipate seal generated heat, vent the seal chamber at start-up and increase the vapor margin in the seal chamber.

Advantages: When used with a close-clearance throat bushing, will raise the pressure in the seal chamber to maintain the process in the liquid state when cooling is not practical. Best for a clean, non-polymerizing process.



Plan 01

Description: Plan 01 is an integral recirculation from the pump discharge to the seal chamber. This is an internal version of Plan 11. Recommended for clean process only.



Objective: Same as Plan 11.

Advantages: No exposed plumbing around pump. Reduces risk of freezing or polymerization of process. Not recommended for vertical pumps.