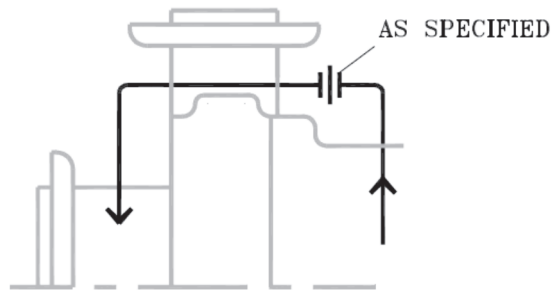


Plan 13



Description: Plan 13 is recirculation from the seal chamber or gland through an 1/8" minimum flow control orifice (when necessary), back to the pump suction. Standard flush plan for vertical pumps.

Objective: Remove seal generated heat and vent vertical pumps.

Advantages: Used in applications where the seal chamber pressure is greater than suction pressure. Can reduce the seal chamber pressure when used along with a close-clearance throat bushing.

