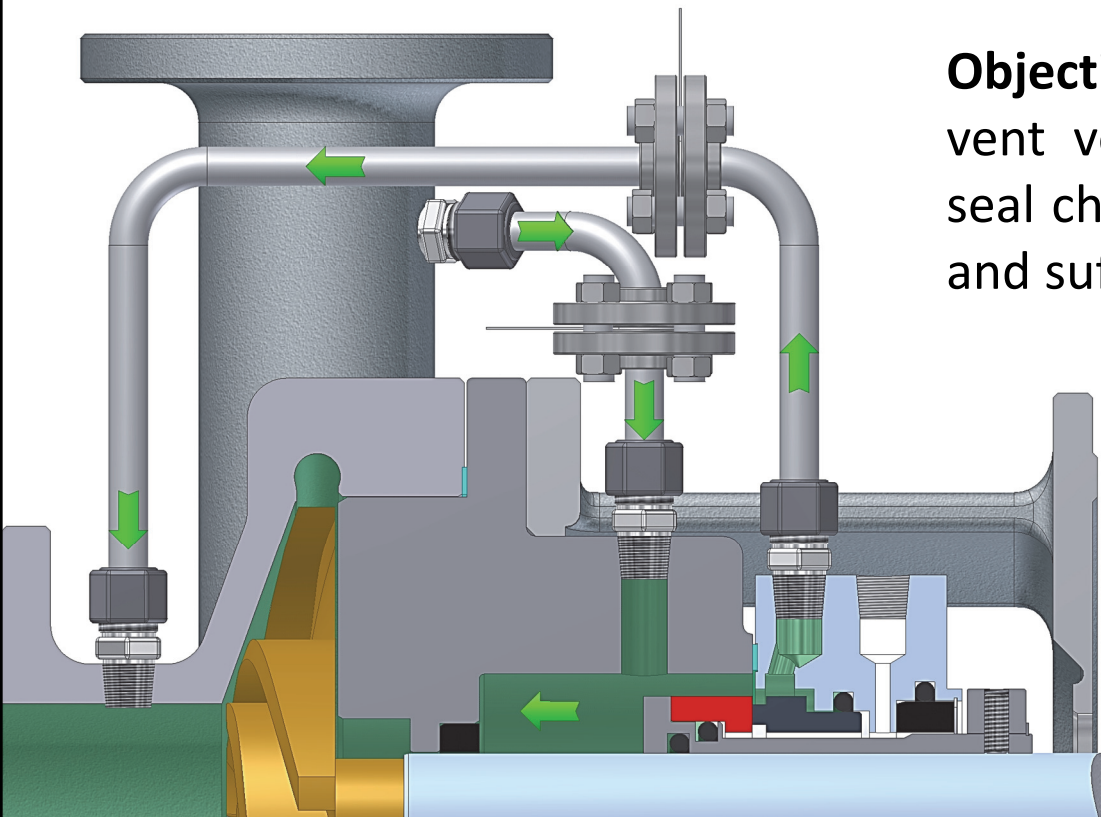
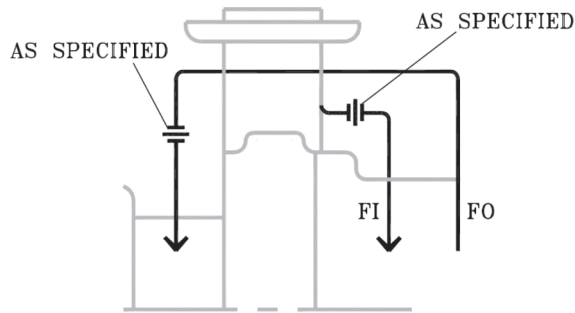


# Plan 14



**Description:** Plan 14 is recirculation from pump discharge through a properly sized flow control orifice (when necessary), to the seal chamber and from the seal chamber through a properly sized flow control orifice (when necessary), to the pump suction. (A combination of Plan 11 and Plan 13)

**Objective:** Remove seal generated heat and vent vertical pumps while providing adequate seal chamber pressure for process vapor margin and sufficient fluid flow for cooling.

**Advantages:** Provides pressure and recirculation inside the seal chamber to avoid vaporizing liquids when used along with a close-clearance throat bushing and properly sized orifice.