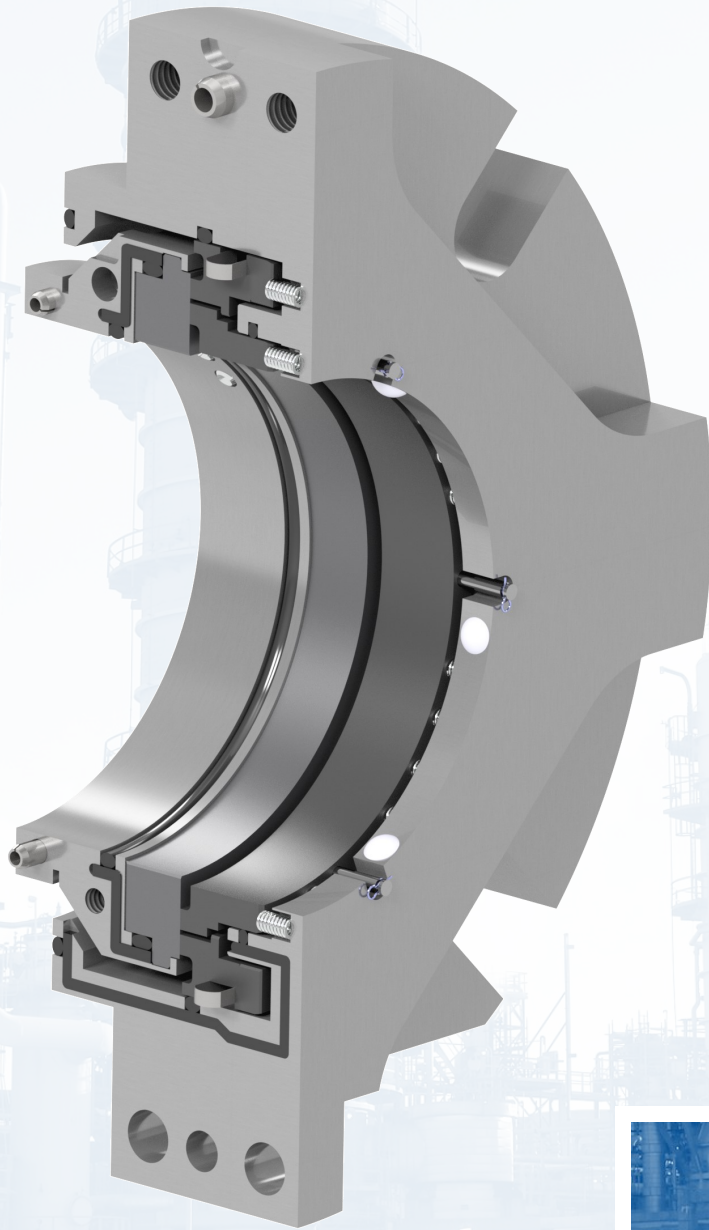




2400S Split Seal

Split double pusher seal



CREATING SEALING SOLUTIONS THROUGH INNOVATIVE ENGINEERING
MADE IN THE USA

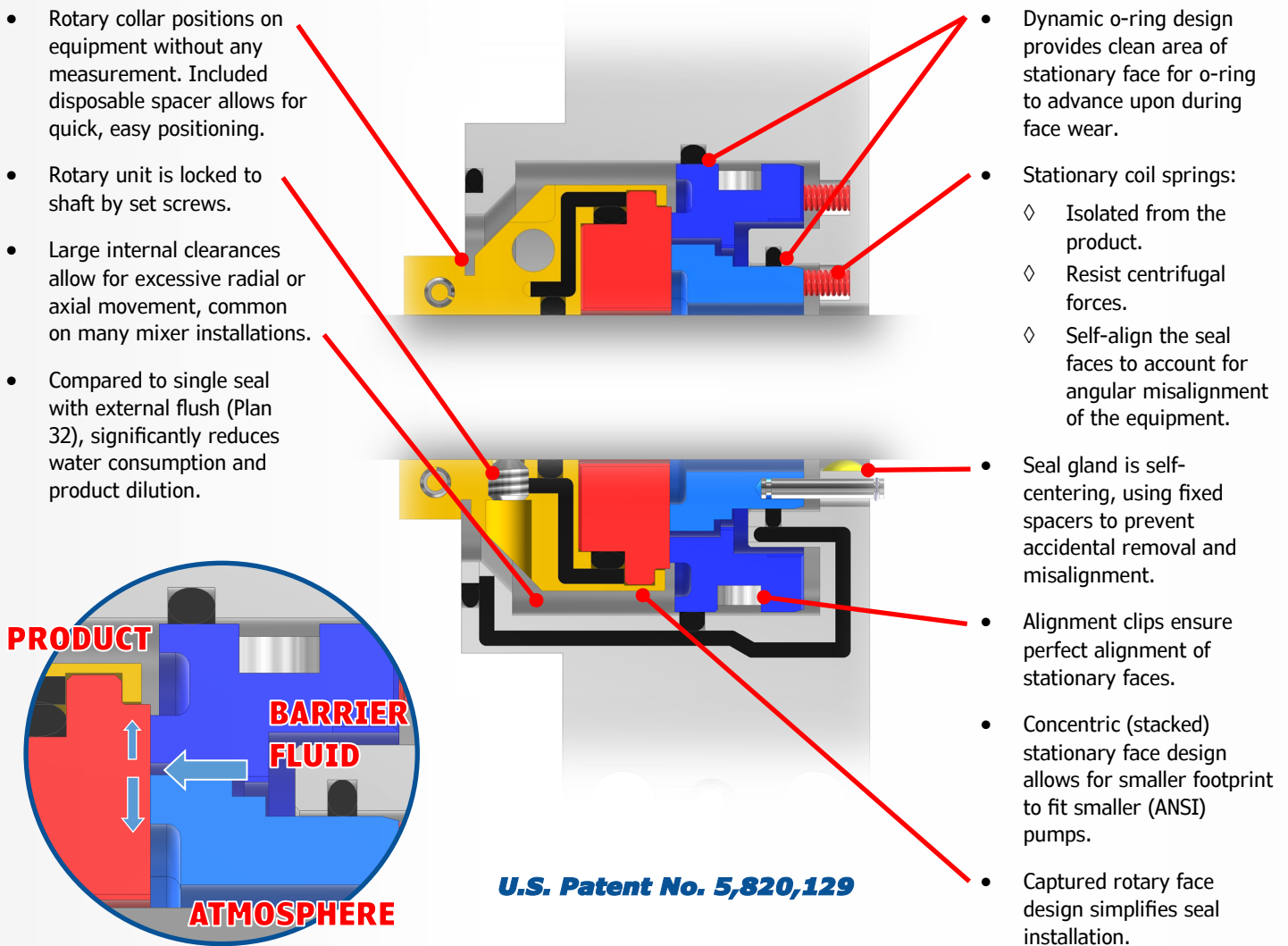
2400S Double Split Seal

DESCRIPTION

The 2400S is the world's first and only stationary split double mechanical seal. This split double seal was developed for those customers that require a double seal, yet don't want to pull the pump every time a change to a double cartridge arrangement is needed. PPC's proven success with the single split has been replicated in the split double. The seal is comprised of six components and utilizes a stacked stationary face setup, concentrically mounted. The robust seal design features large cross-section faces and a stationary spring design to better accommodate equipment misalignment. A split seal installation provides many benefits over solid seals: lower down time, field repairability, greater movement, and no need to dismantle the equipment during seal replacement.

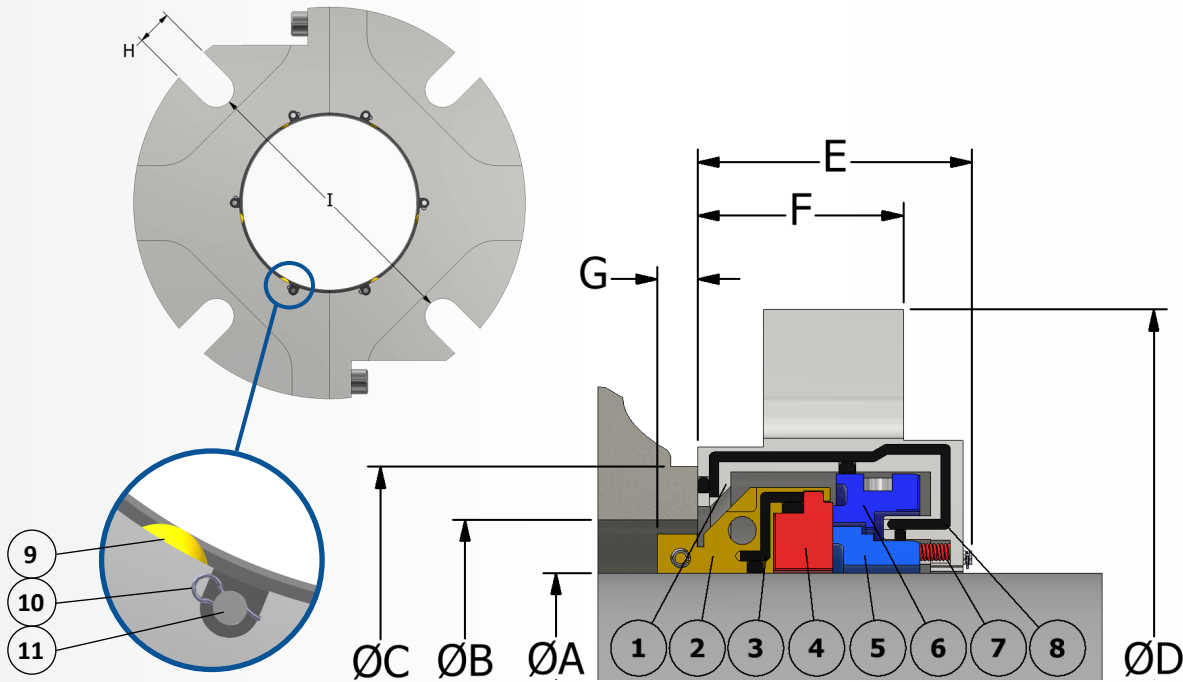
The 2400S is designed and available in sizes to upgrade existing packed pumps or solid seals on stuffing box arrangements. A large bore design (2400S+) is available for select sizes, and solid and split adapter plates are available to convert existing installations where needed.

FEATURES

- 
- Rotary collar positions on equipment without any measurement. Included disposable spacer allows for quick, easy positioning.
 - Rotary unit is locked to shaft by set screws.
 - Large internal clearances allow for excessive radial or axial movement, common on many mixer installations.
 - Compared to single seal with external flush (Plan 32), significantly reduces water consumption and product dilution.
 - Dynamic o-ring design provides clean area of stationary face for o-ring to advance upon during face wear.
 - Stationary coil springs:
 - ◇ Isolated from the product.
 - ◇ Resist centrifugal forces.
 - ◇ Self-align the seal faces to account for angular misalignment of the equipment.
 - Seal gland is self-centering, using fixed spacers to prevent accidental removal and misalignment.
 - Alignment clips ensure perfect alignment of stationary faces.
 - Concentric (stacked) stationary face design allows for smaller footprint to fit smaller (ANSI) pumps.
 - Captured rotary face design simplifies seal installation.
- U.S. Patent No. 5,820,129**

SEAL DIMENSIONAL DATA

2400S Double Split Seal



ITEM	DESCRIPTION
1	Gland
2	Rotary Collar
3	Collar Seam Gasket
4	Rotary Face
5	Outer Stationary Face
6	Inner Stationary Face
7	Springs
8	Gland Seam Gasket
9	Centering Spacers
10	Retaining Clips
11	Anti-rotation Pins

2400S DIMENSIONS FOR STANDARD BORE SEAL CHAMBER

A SEAL SIZE	B (MIN)	B (MAX)	C (MIN)	D	E	F	G	H	I
1.750	2.50	2.75	3.12	6.18	2.32	1.62	0.28	0.56	4.15
1.875	2.63	2.88	3.25	6.31	2.32	1.62	0.28	0.56	4.28
2.000	2.75	3.00	3.37	6.44	2.32	1.62	0.28	0.56	4.39
2.125	2.88	3.13	3.50	6.54	2.32	1.62	0.28	0.69	4.64
2.500	3.25	3.75	4.00	6.90	2.32	1.62	0.28	0.69	5.02
2.625	3.37	3.88	4.12	7.02	2.32	1.62	0.28	0.69	5.14
2.750	3.63	4.25	4.69	7.75	2.69	1.94	0.38	0.69	5.31
3.000	3.88	4.50	4.94	8.00	2.69	1.94	0.38	0.72	5.56
3.250	4.13	4.75	5.19	8.25	2.69	1.94	0.38	0.72	5.81
3.500	4.38	5.00	5.44	8.50	2.69	1.94	0.38	0.81	5.81
3.625	4.50	5.13	5.56	8.63	2.69	1.94	0.38	0.81	6.16
3.750	4.63	5.25	5.69	8.75	2.69	1.94	0.38	0.81	6.31
4.000	4.88	5.50	5.94	9.00	2.69	1.94	0.38	0.81	6.56
4.500	5.38	6.00	6.44	9.50	2.69	1.94	0.38	0.81	7.06
4.750	5.63	6.25	6.69	9.75	2.69	1.94	0.38	0.81	7.31
5.500	6.38	7.50	8.09	11.50	3.69	3.50	0.50	0.94	8.41
6.000	6.88	8.00	8.59	12.00	3.69	3.50	0.50	0.94	8.91
7.000	7.88	9.00	9.59	13.75	3.69	3.50	0.50	1.13	9.91

2400S+ DIMENSIONS FOR BIG BORE SEAL CHAMBER

A SEAL SIZE	B (MIN)	B (MAX)	C (MIN)	D	E	F	G	H	I
1.750+	2.50	4.06	3.78	6.31	2.32	1.62	0.28	0.56	4.50
1.875+	2.63	4.03	3.91	6.25	2.32	1.62	0.28	0.56	4.41
2.125+	2.88	4.44	4.16	7.12	2.32	1.62	0.28	0.69	5.31
2.500+	3.25	5.19	4.53	7.87	2.32	1.62	0.28	0.69	5.62
2.625+	3.37	4.88	4.66	7.50	2.32	1.62	0.28	0.69	5.44

Note: For complete dimensional data, request a copy of typical drawing T-4319 from a PPC Mechanical Seals representative. Contact PPC for any additional size not shown above.

MATERIALS OF CONSTRUCTION

2400S Double Split Seal

Metallurgy: 316 SS Standard
Other materials available, including Duplex SS, Alloy C-276 & Titanium

Seal Face Options:	Rotary Sint. Silicon Carbide Sint. Silicon Carbide	Inner Stationary Sint. Silicon Carbide Carbon (Resin-filled)	Outer Stationary Carbon (Resin-filled) Carbon (Resin-filled)
---------------------------	---	---	---

Elastomers: AFLAS®

Springs: Alloy C-276

AFLAS® is a registered trademark of Asahi Glass Co., Ltd.


OPERATING CONDITIONS

Seal Operating Limits:	Seal Size 1.500" - 2.625" 2-750" - 4.750"	Pressure Limit 150 psig (10 bar g) 125 psig (8.5 bar g)	Speed Limit 3600 RPM 1750 RPM
-------------------------------	--	--	--

*For use with API Plan 54. Pressures listed represent barrier pressure.
Contact PPC for limits on sizes greater than 4.750"*

Process Temperature: 0 to 300 °F (-18 to 150 °C)
Contact PPC for specific applications outside these parameters

APPLICATIONS

- 
- Pulp and Paper
 - Power Generation
 - Corn and Grains Processing
 - Petrochemicals (non-hazardous)
 - Wastewater Treatment
 - Water Systems
 - Mining

ADVANTAGES OF A SPLIT SEAL INSTALLATION

- Equipment does not need to be dismantled
- Reduced maintenance cost
- Drastically cuts down turnaround time
- No packing gland to re-tighten
- Won't wear or score shaft
- Operates with less leakage than packing
- Consumes less power than packing
- Less time needed for install compared to packing

CONTACT US

www.ppcmechanicalseals.com • sales@ppcmechanicalseals.com
PH: 1-800-731-7325 • 1-225-356-4333
2769 Mission Drive • Baton Rouge, LA 70805

B-SEAL-3004 Rev. 10/2021
©2021 PPC Mechanical Seals