



Seal Water Control

*All-in-one controllers for
single and dual seals*



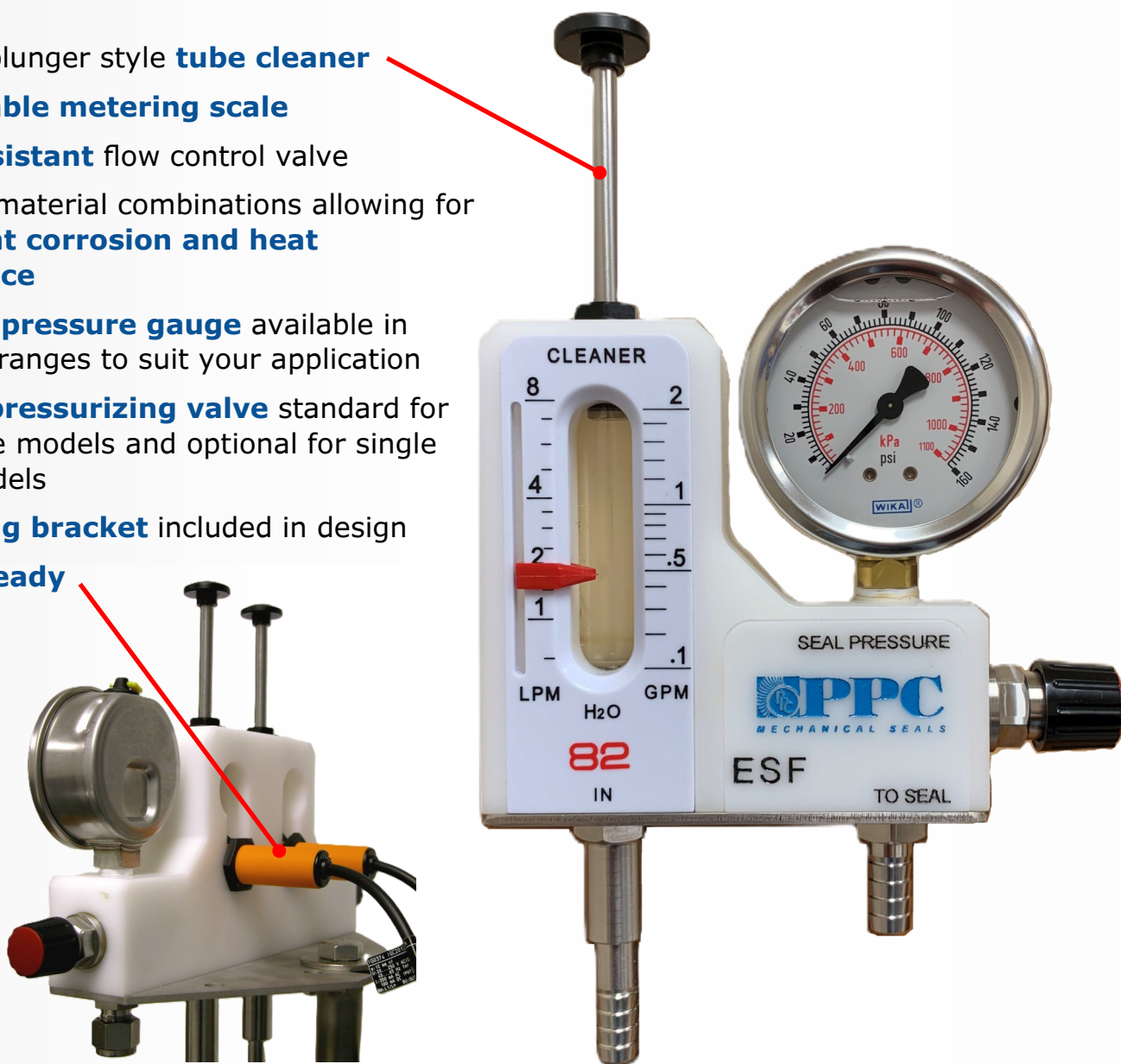
**CREATING SEALING SOLUTIONS THROUGH INNOVATIVE ENGINEERING
MADE IN THE USA**

DESCRIPTION

For installations requiring external seal water, PPC offers economical controllers where flow and pressure can be monitored. Flow is adjusted with a clog resistant needle valve, and the unit features a built in plunger for cleaning the meter face. Control over the seal water allows for proper seal operation and water savings, reducing utility and maintenance costs. Single and dual tube models are available, with the latter able to monitor water flow both into and out of the seal for Plan 54/55 dual seal applications.

FEATURES

- Built-in plunger style **tube cleaner**
- **Detachable metering scale**
- **Clog-resistant** flow control valve
- Multiple material combinations allowing for **excellent corrosion and heat resistance**
- Optional **pressure gauge** available in multiple ranges to suit your application
- Built-in **pressurizing valve** standard for dual tube models and optional for single tube models
- **Mounting bracket** included in design
- **Alarm ready**



ORDERING—SINGLE TUBE

Seal Water Control

ESF		-							SINGLE FLOW MONITOR
	120								1 LPM 17 US GPH
	350								3 LPM 50 US GPH
	82								8 LPM 2 US GPM
	1335								13 LPM 3.5 US GPM
									BODY MATERIAL
		P							Delrin® (POM) STANDARD
		K							Kynar® (PVDF)
		S							316 SS
									CONNECTION TYPE
		H							3/8" ID hose barb
		R							1/2" ID hose barb
		W							10mm ID hose barb
		S							3/8" OD straight tube
		O							1/2" OD straight tube
		T							3/8" compression fitting (with nut and 2 ferrules)
		Y							1/2" compression fitting (with nut and 2 ferrules)
		M							1/4" male NPT adapter
		N							1/4" female NPT adapter
									PRESSURE GAUGE
		A							15 psi
		B							30 psi
		C							60 psi
		D							100 psi
		E							160 psi STANDARD
		F							200 psi
		G							300 psi
		H							400 psi
		I							100 psi with red set pointer
		J							160 psi with red set pointer
		K							200 psi with red set pointer
		L							300 psi with red set pointer
		M							400 psi with red set pointer
		X							No pressure gauge
									OPTIONS
		P							Pressuring valve (for double seal with ESF Model)
		X							No pressurizing valve
			S						Stand
			X						No stand
			A						Alarm 10-55 VDC 150 mA (IG 5919)
			B						Alarm 20-250 VAC/DC 300 mA (IG 0374)
			X						No alarm

ORDERING—DUAL TUBE

Seal Water Control

EDF		-				X			DUAL FLOW MONITOR
	120								1 LPM
	350								20 US GPH
	82								3 LPM
	1335								50 US GPH
									8 LPM
									2 US GPM
									13 LPM
									3.5 US GPM
									BODY MATERIAL
		P							Delrin® (POM) STANDARD
		K							Kynar® (PVDF)
									CONNECTION TYPE
		H							3/8" ID hose barb
		R							1/2" ID hose barb
		W							10mm ID hose barb
		S							3/8" OD straight tube
		O							1/2" OD straight tube
		T							3/8" compression fitting (with nut and 2 ferrules)
		Y							1/2" compression fitting (with nut and 2 ferrules)
		M							1/4" male NPT adapter
		N							1/4" female NPT adapter
									PRESSURE GAUGE
		A							15 psi
		B							30 psi
		C							60 psi
		D							100 psi
		E							160 psi STANDARD
		F							200 psi
		G							300 psi
		H							400 psi
		I							100 psi with red set pointer
		J							160 psi with red set pointer
		K							200 psi with red set pointer
		L							300 psi with red set pointer
		M							400 psi with red set pointer
		X							No pressure gauge
									OPTIONS
		X							Pressurizing valve (included with EDF)
			S						Stand
			X						No stand
				A					Alarm 10-55 VDC 150 mA (IG 5919)
				B					Alarm 20-250 VAC/DC 300 mA (IG 0374)
				C					Dual Alarm 10-55 VDC 150 mA
				D					Dual Alarm 20-250 VAC/DC 300 mA
				X					No alarm

Body: Delrin® (POM) **Standard**
Kynar® (PVDF)
316 SS (ESF Only)

Metering Tube: Polysulphone (PSU) **Standard for Delrin® and Kynar® bodies**
PES
Borosilicate glass **Standard for 316 SS bodies**

Metal Parts: 316SS, 304SS

Elastomers: Fluoroelastomer (FKM) **Standard**
EPDM

OPERATING CONDITIONS

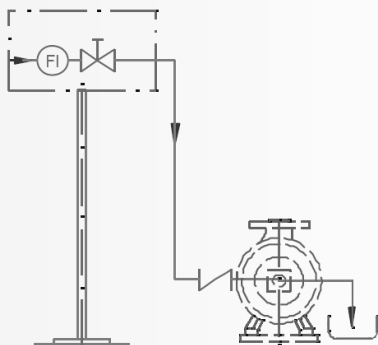
Seal Water Pressure: Up to 435 psig (30 bar g) at 120°F (49 °C)

Seal Water Temperature: Up to 212°F (100 °C) for Delrin® bodies
Up to 266°F (130 °C) for Kynar® and 316 SS bodies

TYPICAL APPLICATIONS

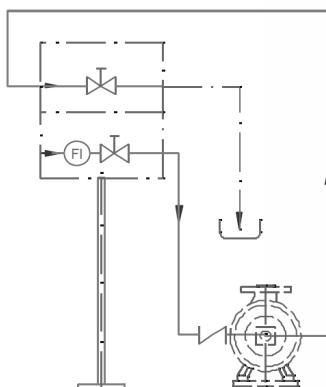
Single Tube (ESF) w/o pressurizing valve

- Plan 32 external flush
- Plan 55 external buffer fluid without seal outlet flow monitoring



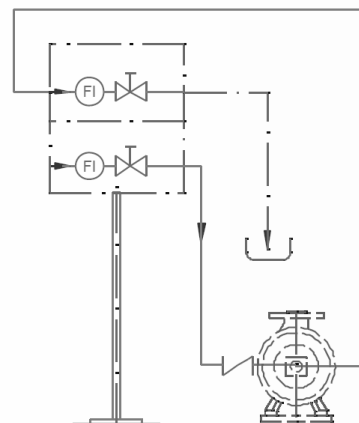
Single Tube (ESF) w/ pressurizing valve

- Plan 54 external barrier fluid without seal outlet flow monitoring



Dual Tube (EDF)

- Plan 54/55 external barrier/buffer fluid with seal outlet flow monitoring



CONTACT US

www.ppcmechanicalseals.com • sales@ppcmechanicalseals.com
PH: 1-800-731-7325 • 1-225-356-4333
2769 Mission Drive • Baton Rouge, LA 70805

B-ACC-3019 Rev. 12/2025
©2025 PPC Mechanical Seals

Delrin® is a registered trademark of Delrin USA, LLC
Kynar® is a registered trademark of Arkema, Inc.